

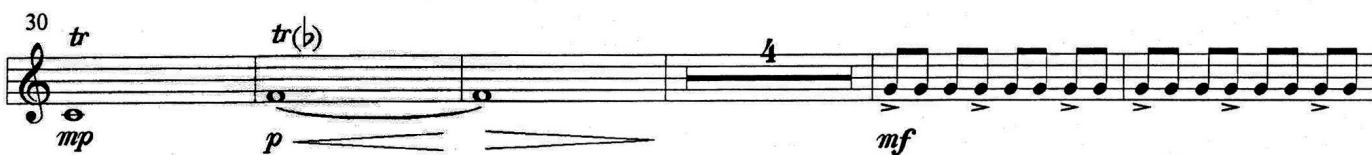
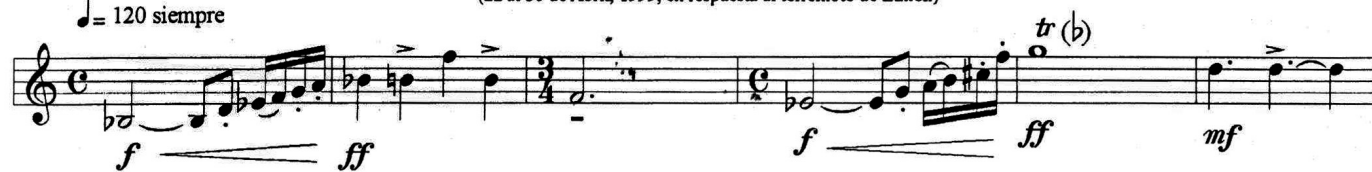
# "La tierra nos quería tragar"

## Oboe

Tomado del titular del periódico La Nación del 22 de Abril de 1991  
Bosquejo para quinteto de maderas  
(22 al 30 de Abril, 1999, en respuesta al terremoto de Limón)

Carlos José Castro Mora

♩ = 120 siempre



56

*mp*

69

Musical notation for exercise 69, measures 1-6. The notation is on a single staff with a treble clef. Measure 1: A half note G4, a half note A4. Measure 2: A quarter note B4, a quarter note C5, a quarter note B4, a quarter note A4. Measure 3: A half note G4, a half note F#4. Measure 4: A whole note E4. Measure 5: A half note D4, a half note C4. Measure 6: A half note B3, a half note A3.

78

78

85

85

85

93

*f*

100

mf

2

3

The musical score for 'The Rose Tree' is written on a single staff in treble clef with a common time signature (C). The key signature has one flat (B-flat). The piece begins with a piano introduction consisting of a whole note chord (F major) followed by a half rest. The main melody starts on the second measure with a half note G4, followed by a half note A4. The third measure contains a triplet of eighth notes: G4, A4, and Bb4. The fourth measure features a half note G4. The fifth measure contains a half note F4. The sixth measure contains a half note E4. The seventh measure contains a half note D4. The eighth measure contains a half note C4. The piece concludes with a final whole note chord (F major) in the ninth measure.

106

*f*

6

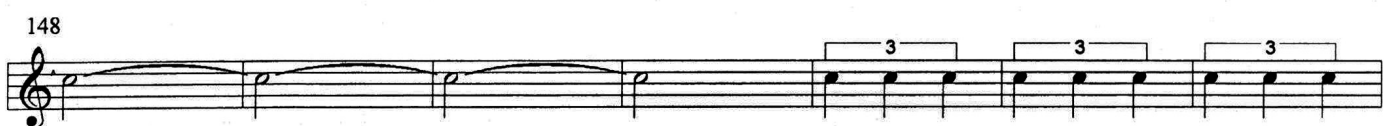
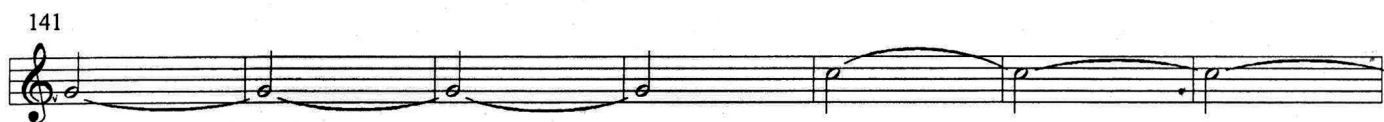
111

pp

Measures 111 and 112 of the piano score. Measure 111 contains a half note G4, a half note A4, a half note B4, and a half note C5, all beamed together. Measure 112 contains a half note D5, a half note E5, a half note F5, and a half note G5, all beamed together. The piece ends with a double bar line and a repeat sign.

118

*f* *p*



188

197

206

212

218

227

231

235

239

*ff*

*mf*

*f* *ff* *f*

*fp* *mp* *p* *f* *p*

*mp*